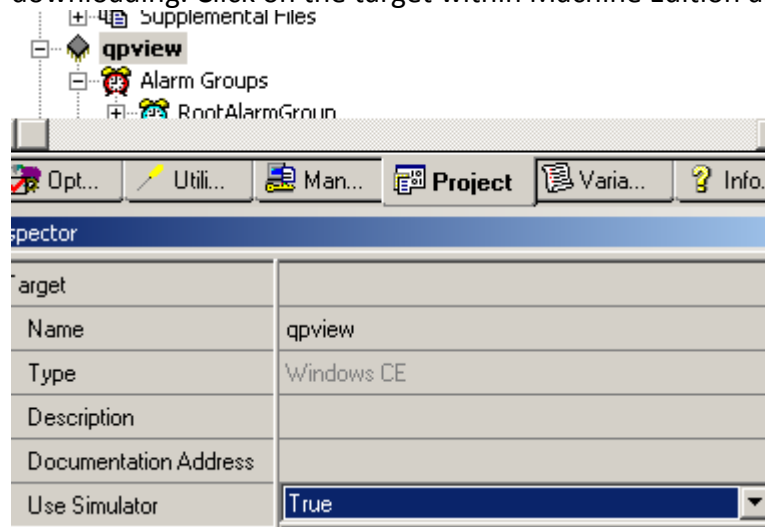


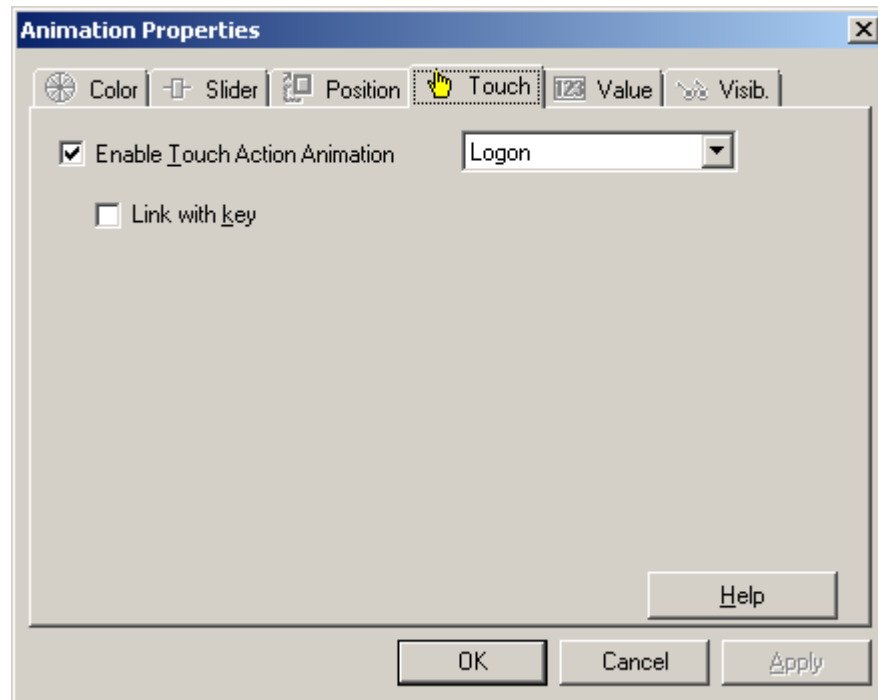
Decrease your Security Risk with GE QuickPanels

Decrease your security risk by giving certain users privileges. GE's series of QuickPanel HMIs use security to do just this. Here is how to configure and implement security on QuickPanels.

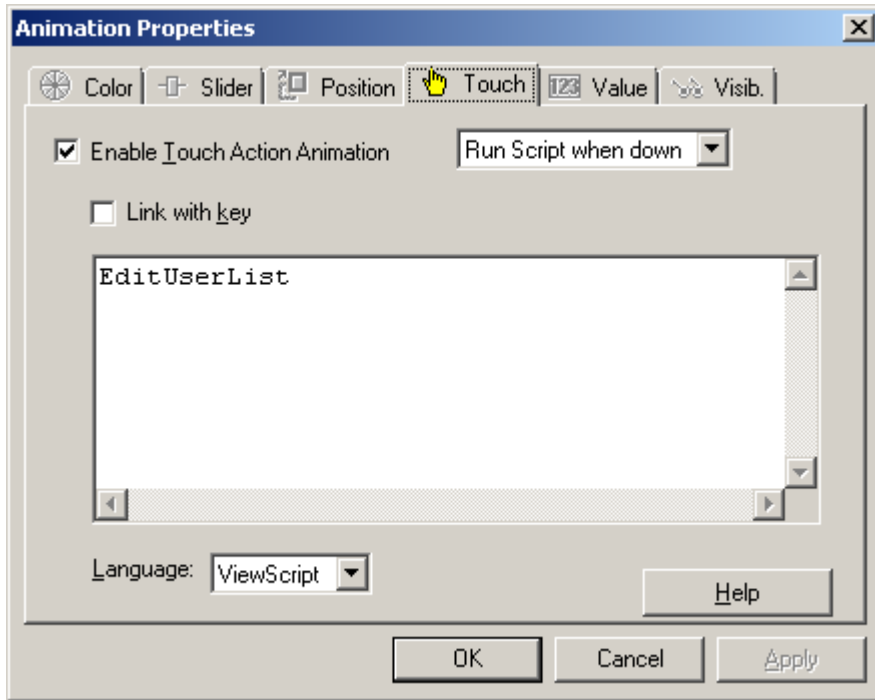
The act of configuring users is done during the runtime. Typically this means downloading and running on the QuickPanel itself but you can simulate the project on the PC before downloading. Click on the target within Machine Edition and enable the Simulate property.



Next, create/edit a panel and add two buttons anywhere. Double click one button to give a touch animation of Logon.



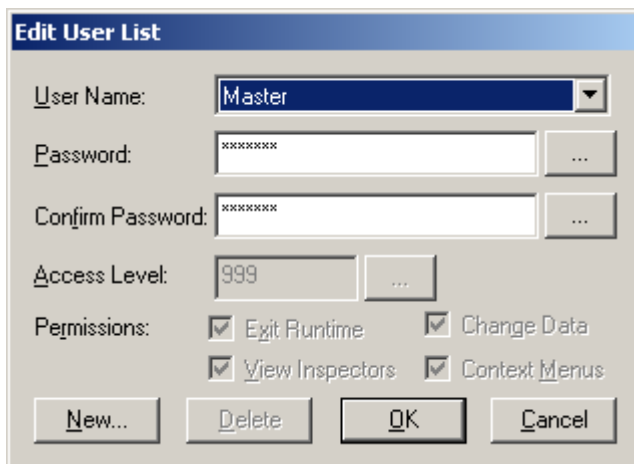
Double click the other button and give it a Touch animation with a script. You'll be using the `EditUserList` command which can be found by right clicking in the script body.



Now download the project and run. The target has been set to simulate so it should run on your local PC. Open the panel you've made and you'll see the two buttons we placed. Click the first button to trigger the logon dialogue. The default credential is:

```
username: master  
password: control
```

After logging in, click on the second button to trigger the `EditUserList` dialogue. This window is where we create new users, access levels, and permissions.



At this point, security has been configured but it hasn't been implemented. Simply hide objects in all your panels by their Visibility Animation. Objects can be visible based on user or access level as shown below.

